



**MATERIAL PALETTE**

1 BRICK LIGHT	17 ALUMINIUM CURTAINWALL SYSTEM, IN BLACK
2 VERTICAL PLANK CEMENT PANEL SIDING LIGHT GREY	18 ALUMINIUM STOREFRONT GLAZING, IN BLACK
3 PERFORATED SOFFIT, IN WHITE	19 ALUMINIUM STOREFRONT DOORS, IN BLACK
4 PERFORATED SOFFIT WOOD-LOOK PLANK, IN DOUGLAS FIR	20 VINYL SWING GLASS DOOR, IN BLACK
5 WOOD-LOOK PLANK CLADDING, IN DOUGLAS FIR	21 VINYL WINDOWS, IN BLACK
6 FIBRE CEMENT PLANK LAP SIDING, WOOD GRAIN FINISH, IN DARK GREY	22 STEEL DOOR, IN BLACK
7 FIBRE CEMENT PANEL SIDING, SMOOTH FINISH, IN WHITE	23 PARKADE OVERHEAD DOOR, PICKET STYLE, IN BLACK
8 FIBRE CEMENT PANEL SIDING, SMOOTH FINISH, IN WARM GRAY	24 LOW SLOPED MEMBRANE DECK, IN DARK GREY TONES, WITH PARAPET AND CAP FLASHING
9 FIBRE CEMENT PANEL SIDING, SMOOTH FINISH, IN DARK GRAY	25 FASCIA: FIBRE CEMENT PANEL SIDING, WITH ALUMINIUM CAP FLASHING COLOUR TO MATCH FASCIA.
10 VINYL DECKING, LIGHT GREY TONES	26 SIGNAGE
11 FASCIA-MOUNTED ALUMINIUM GUARDRAIL AND RAILING, POWDER COATED, BLACK, WITH PICKET GUARDS	27 PLANTERS, REFER TO LANDSCAPE ARCHITECT PACKAGE
12 BLACK SOILD GUAURD RAILING	28 ELEVATOR OVER-RUN
13 BLACK GUARDRAIL AND RAILING GLASS RAILING	29 MECHANICAL ROOM
14 COLUMNS, WHITE/ BLACK	
15 COLUMNS, WOOD FEATURE TO MATCH WOOD-LOOK SIDING	
16 CONCRETE WALL, SACK FINISHED, PAINT SEALED	

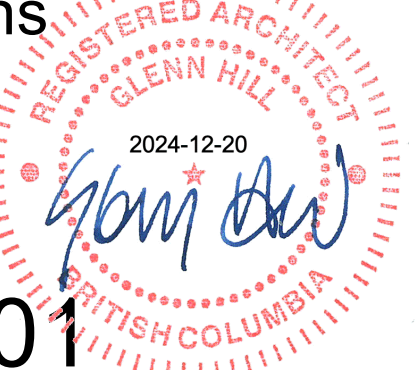
\* NOTE: FLASHING TO COLOUR MATCH MATERIALS  
 \* NOTE: ILLUSTRATED BUILDING SIGNAGE IS PLACEHOLDER AND IS TO BE CONFIRMED IN A SEPARATE SIGNAGE APPLICATION TO MEET CITY OF NANIMO SIGNAGE REQUIREMENTS

**RECEIVED**  
**DP1373**  
**2025-JAN-14**  
 Current Planning

1	24-12-20	ISSUED FOR DP
Rev	Date	Description
plot date	24-09-04	drawing file
drawn by	DRS	checked by
scale	-	project number
		2436

NOTE: All dimensions are shown in millimeters.

**Linley Valley**  
 6045 Linley Valley Drive &  
 6055 Turner Road  
**Building A - N & W**  
**Elevations**



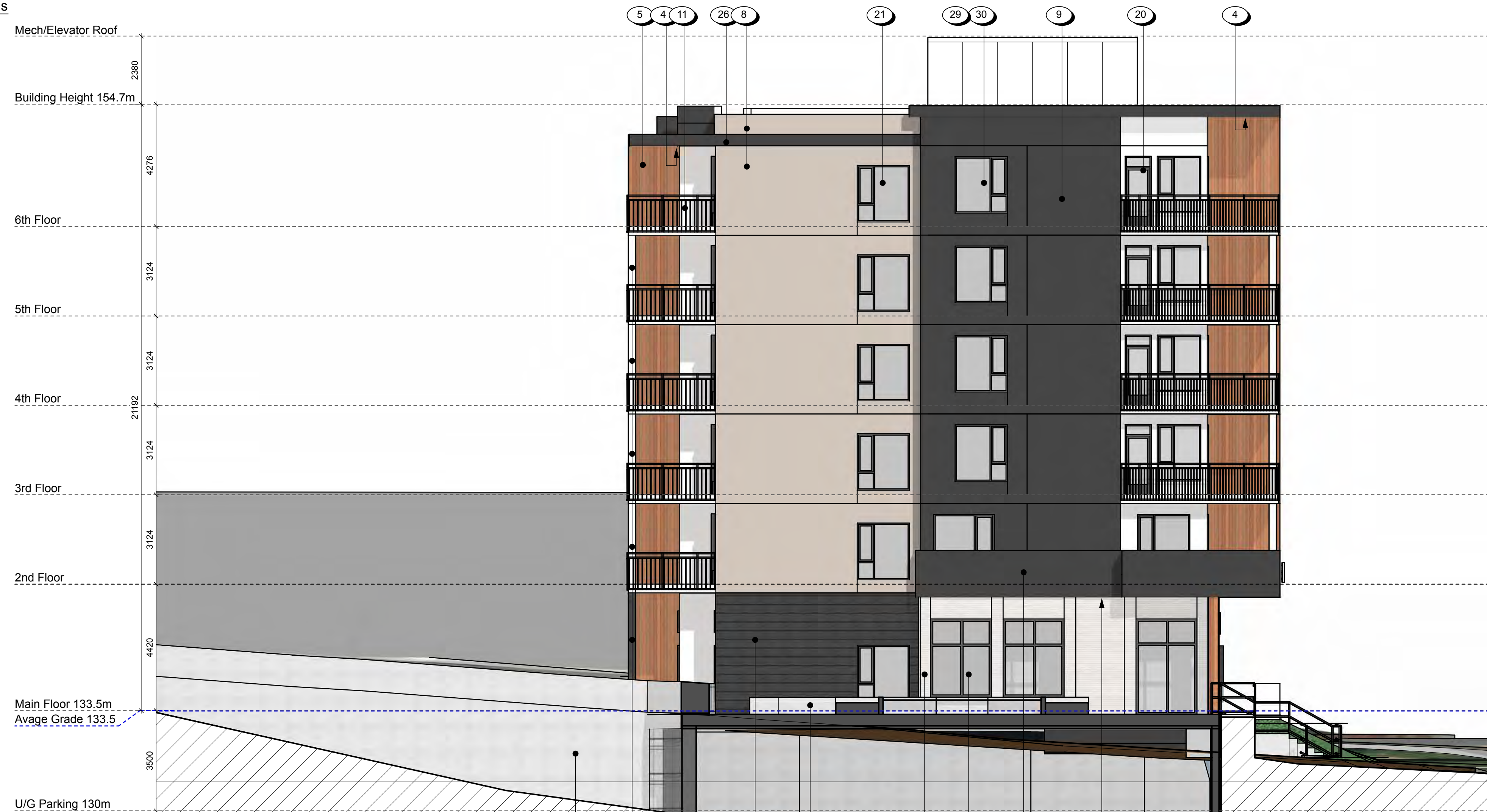
**dHka A301**

dHkarchitects  
 Victoria  
 977 Fort Street V8V 3K3 T 1-250-658-3367  
 Nanaimo  
 102-5190 Dublin Way V9T 2K8 T 1-250-585-5810  
 COPYRIGHT RESERVED. THESE PLANS AND DESIGNS ARE AND AT ALL TIMES REMAIN THE PROPERTY OF dHkARCHITECTS TO BE USED FOR THE PROJECT SHOWN AND MAY NOT BE REPRODUCED WITHOUT WRITTEN CONSENT.





1 South Elevations  
A302  
Scale: 1:100



2 East Elevations  
A302  
Scale: 1:100

MATERIAL PALETTE			
1	BRICK LIGHT	17	ALUMINIUM CURTAINWALL SYSTEM, IN BLACK
2	VERTICAL PLANK CEMENT PANEL SIDING LIGHT GREY	18	ALUMINIUM STOREFRONT GLAZING, IN BLACK
3	PERFORATED SOFFIT, IN WHITE	19	ALUMINIUM STOREFRONT DOORS, IN BLACK
4	PERFORATED SOFFIT WOOD-LOOK PLANK, IN DOUGLAS FIR	20	VINYL SWING GLASS DOOR, IN BLACK
5	WOOD-LOOK PLANK CLADDING, IN DOUGLAS FIR	21	VINYL WINDOWS, IN BLACK
6	FIBRE CEMENT PLANK LAP SIDING, WOOD GRAIN FINISH, IN DARK GREY	22	STEEL DOOR, IN BLACK
7	FIBRE CEMENT PANEL SIDING, SMOOTH FINISH, IN WHITE	23	PARKADE OVERHEAD DOOR, PICKET STYLE, IN BLACK
8	FIBRE CEMENT PANEL SIDING, SMOOTH FINISH, IN WARM GRAY	24	LOW SLOPED MEMBRANE DECK, IN DARK GREY TONES, WITH PARAPET AND CAP FLASHING
9	FIBRE CEMENT PANEL SIDING, SMOOTH FINISH, IN DARK GRAY	25	FASCIA: FIBRE CEMENT PANEL SIDING, WITH ALUMINIUM CAP FLASHING COLOUR TO MATCH FASCIA
10	VINYL DECKING, LIGHT GREY TONES	26	SIGNAGE
11	FASCIA-MOUNTED ALUMINIUM GUARDRAIL AND RAILING, POWDER COATED, BLACK, WITH PICKET GUARDS	27	PLANTERS, REFER TO LANDSCAPE ARCHITECT PACKAGE
12	BLACK SOLID GAUARD RAILING	28	ELEVATOR OVER-RUN
13	BLACK GUARDRAIL AND RAILING GLASS RAILING	29	MECHANICAL ROOM
14	COLUMNS, WHITE/ BLACK		
15	COLUMNS, WOOD FEATURE TO MATCH WOOD-LOOK SIDING		
16	CONCRETE WALL, SACK FINISHED, PAINT SEALED		

\* NOTE: FLASHING TO COLOUR MATCH MATERIALS  
\* NOTE: ILLUSTRATED BUILDING SIGNAGE IS PLACEHOLDER AND IS TO BE CONFIRMED IN A SEPARATE SIGNAGE APPLICATION TO MEET CITY OF NANIMO SIGNAGE REQUIREMENTS

RECEIVED  
DP1373  
2025-JAN-14  
Current Planning

Rev	Date	Description
1	24-12-20	ISSUED FOR DP
2	24-09-04	drawing file
3		checked by
4		project number

scale: - project number 2436

NOTE: All dimensions are shown in millimeters.

Linley Valley  
6045 Linley Valley Drive &  
6055 Turner Road  
Building A - S & E  
Elevations

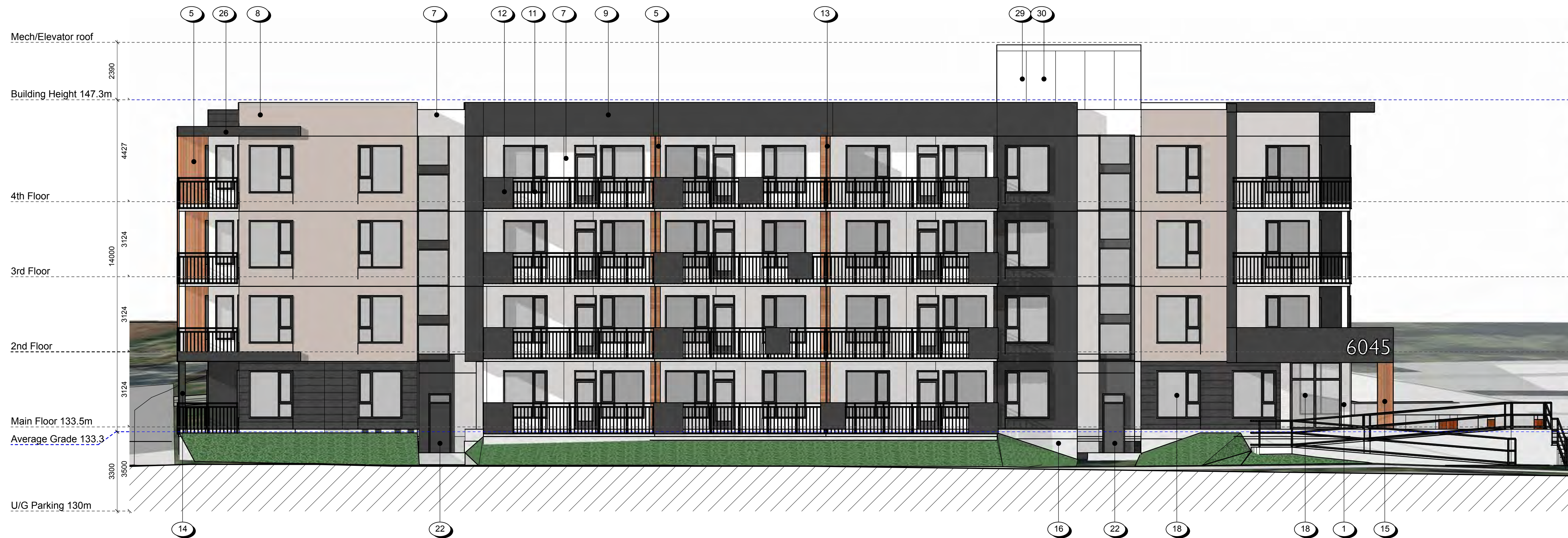


dHk Architects A302

dHk Architects  
Victoria  
977 Fort Street V8V 3K3 T 1-250-658-3367  
Nanaimo  
102-5190 Dublin Way V9T 2K8 T 1-250-585-5810

COPYRIGHT RESERVED. THESE PLANS AND DESIGNS ARE AND AT ALL TIMES REMAIN THE PROPERTY OF dHk ARCHITECTS TO BE USED FOR THE PROJECT SHOWN AND MAY NOT BE REPRODUCED WITHOUT WRITTEN CONSENT.

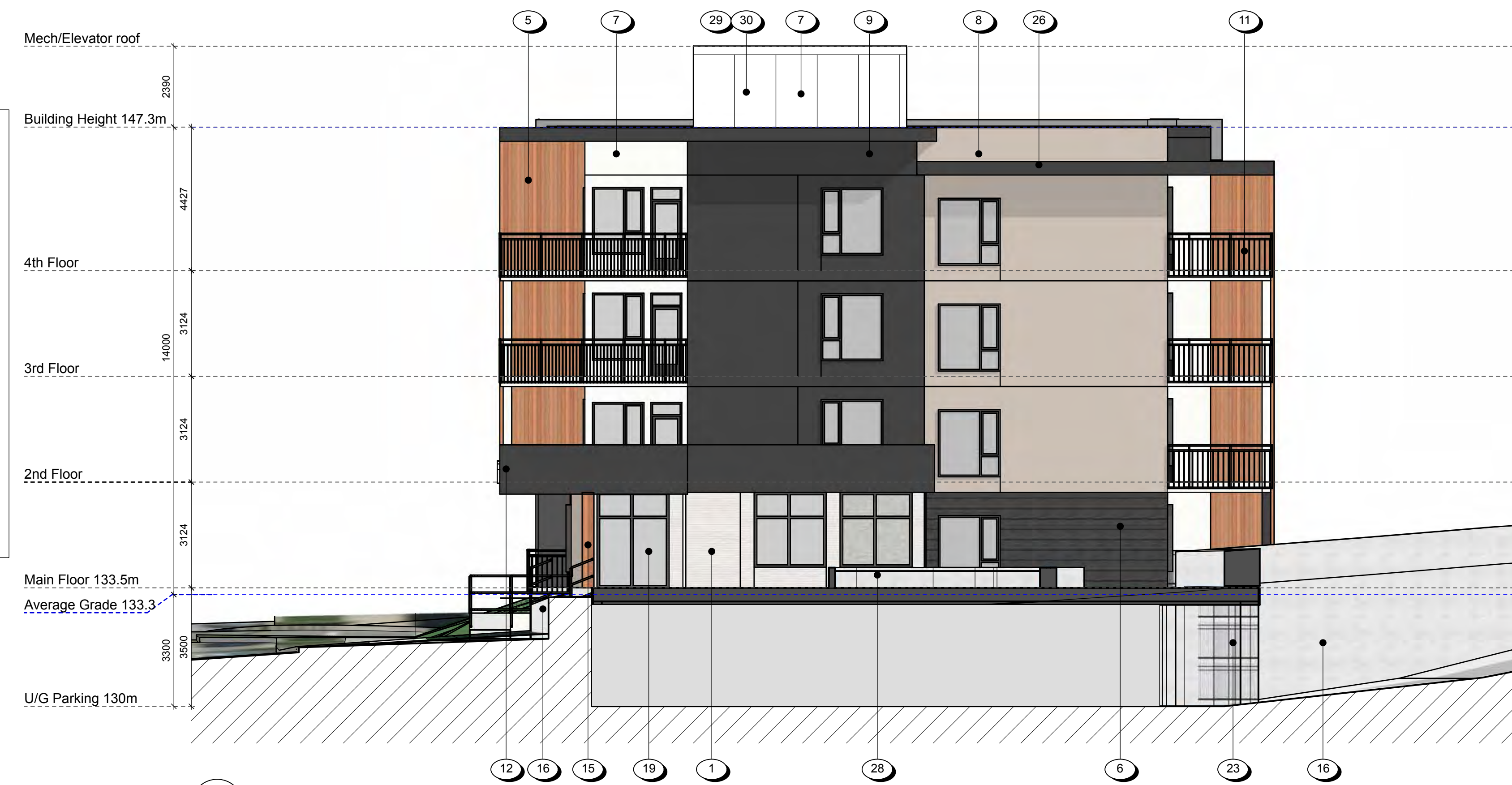




1 North Elevation  
A303 Scale: 1:100

**MATERIAL PALETTE**

- |   |   |
|---|---|
| 1 BRICK LIGHT   | 17 ALUMINIUM CURTAINWALL SYSTEM, IN BLACK   |
| 2 VERTICAL PLANK CEMENT PANEL SIDING LIGHT GREY   | 18 ALUMINIUM STOREFRONT GLAZING, IN BLACK   |
| 3 PERFORATED SOFFIT, IN WHITE   | 19 ALUMINIUM STOREFRONT DOORS, IN BLACK   |
| 4 PERFORATED SOFFIT WOOD-LOOK PLANK, IN DOUGLAS FIR   | 20 VINYL SWING GLASS DOOR, IN BLACK   |
| 5 WOOD-LOOK PLANK CLADDING, IN DOUGLAS FIR  | 21 VINYL WINDOWS, IN BLACK  |
| 6 FIBRE CEMENT PLANK LAP SIDING, WOOD GRAIN FINISH, IN DARK GREY                            | 22 STEEL DOOR, IN BLACK   |
| 7 FIBRE CEMENT PANEL SIDING, SMOOTH FINISH, IN WHITE  | 23 PARKADE OVERHEAD DOOR, PICKET STYLE, IN BLACK  |
| 8 FIBRE CEMENT PANEL SIDING, SMOOTH FINISH, IN WARM GRAY                                    | 24 LOW SLOPED MEMBRANE DECK, IN DARK GREY TONES,  |
| 9 FIBRE CEMENT PANEL SIDING, SMOOTH FINISH, IN DARK GRAY                                    | 25 LOW SLOPED MEMBRANE ROOF, IN DARK GREY TONES, WITH PARAPET AND CAP FLASHING            |
| 10 VINYL DECKING, LIGHT GREY TONES  | 26 FASCIA, FIBRE CEMENT PANEL SIDING, WITH ALUMINIUM CAP FLASHING COLOUR TO MATCH FASCIA. |
| 11 FASCIA-MOUNTED ALUMINIUM GUARDRAIL AND RAILING, POWDER COATED, BLACK, WITH PICKET GUARDS | 27 SIGNAGE  |
| 12 BLACK SOLID GUARDRAIL RAILING  | 28 PLANTERS, REFER TO LANDSCAPE ARCHITECT PACKAGE   |
| 13 BLACK GUARDRAIL AND RAILING GLASS RAILING  | 29 ELEVATOR OVER-RUN  |
| 14 COLUMNS, WHITE/BLACK   | 30 MECHANICAL ROOM  |
| 15 COLUMNS, WOOD FEATURE TO MATCH WOOD-LOOK SIDING  |   |
| 16 CONCRETE WALL, SACK FINISHED, PAINT SEALED   |   |
- \* NOTE: FLASHING TO COLOUR MATCH MATERIALS  
\* NOTE: ILLUSTRATED BUILDING SIGNAGE IS PLACEHOLDER AND IS TO BE CONFIRMED IN A SEPARATE SIGNAGE APPLICATION TO MEET CITY OF NANIMO SIGNAGE REQUIREMENTS



2 West Elevation  
A303 Scale: 1:100

**RECEIVED**  
**DP1373**  
**2025-JAN-14**  
Current Planning

Rev	Date	Description
1	24-12-20	ISSUED FOR DP
2	24-09-04	drawing file
3		checked by GTH
4		project number 2436

NOTE: All dimensions are shown in millimeters.

**Linley Valley**  
6045 Linley Valley Drive &  
6055 Turner Road  
**Building B - N & W**  
**Elevations**







1 South Elevations  
A304 Scale: 1:100



2 East Elevations  
A304 Scale: 1:100

**MATERIAL PALETTE**

- |   |   |
|---|---|
| 1 BRICK LIGHT   | 17 ALUMINIUM CURTAINWALL SYSTEM, IN BLACK   |
| 2 VERTICAL PLANK CEMENT PANEL SIDING LIGHT GREY   | 18 ALUMINIUM STOREFRONT GLAZING, IN BLACK   |
| 3 PERFORATED SOFFIT, IN WHITE   | 19 ALUMINIUM STOREFRONT DOORS, IN BLACK   |
| 4 PERFORATED SOFFIT WOOD-LOOK PLANK, IN DOUGLAS FIR   | 20 VINYL SWING GLASS DOOR, IN BLACK   |
| 5 WOOD-LOOK PLANK CLADDING, IN DOUGLAS FIR  | 21 VINYL WINDOWS, IN BLACK  |
| 6 FIBRE CEMENT PLANK LAP SIDING, WOOD GRAIN FINISH, IN DARK GREY                            | 22 STEEL DOOR, IN BLACK   |
| 7 FIBRE CEMENT PANEL SIDING, SMOOTH FINISH, IN WHITE  | 23 PARKADE OVERHEAD DOOR, PICKET STYLE, IN BLACK  |
| 8 FIBRE CEMENT PANEL SIDING, SMOOTH FINISH, IN WARM GRAY                                    | 24 LOW SLOPED MEMBRANE DECK, IN DARK GREY TONES,  |
| 9 FIBRE CEMENT PANEL SIDING, SMOOTH FINISH, IN DARK GRAY                                    | 25 LOW SLOPED MEMBRANE ROOF, IN DARK GREY TONES, WITH PARAPET AND CAP FLASHING            |
| 10 VINYL DECKING, LIGHT GREY TONES  | 26 FASCIA: FIBRE CEMENT PANEL SIDING, WITH ALUMINIUM CAP FLASHING COLOUR TO MATCH FASCIA. |
| 11 FASCIA-MOUNTED ALUMINIUM GUARDRAIL AND RAILING, POWDER COATED, BLACK, WITH PICKET GUARDS | 27 SIGNAGE  |
| 12 BLACK SOLID GUARD RAILING  | 28 PLANTERS, REFER TO LANDSCAPE ARCHITECT PACKAGE   |
| 13 BLACK GUARDRAIL AND RAILING GLASS RAILING  | 29 ELEVATOR OVER-RUN  |
| 14 COLUMNS, WHITE/BLACK   | 30 MECHANICAL ROOM  |
| 15 COLUMNS, WOOD FEATURE TO MATCH WOOD-LOOK SIDING  |   |
| 16 CONCRETE WALL, SACK FINISHED, PAINT SEALED   |   |

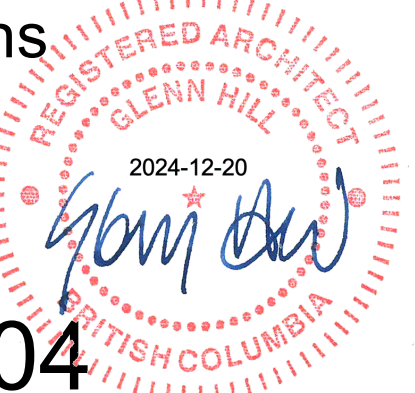
\* NOTE: FLASHING TO COLOUR MATCH MATERIALS  
\* NOTE: ILLUSTRATED BUILDING SIGNAGE IS PLACEHOLDER AND IS TO BE CONFIRMED IN A SEPARATE SIGNAGE APPLICATION TO MEET CITY OF NANIMO SIGANCE REQUIREMENTS

**RECEIVED**  
**DP1373**  
**2025-JAN-14**  
Current Planning

Rev	Date	Description
1	24-12-20	ISSUED FOR DP
plot date	24-09-04	drawing file
drawn by	DRS	checked by
scale	-	project number
		2436

NOTE: All dimensions are shown in millimeters.

**Linley Valley**  
6045 Linley Valley Drive &  
6055 Turner Road  
**Building B - S & E**  
**Elevations**



dHka **A304**